

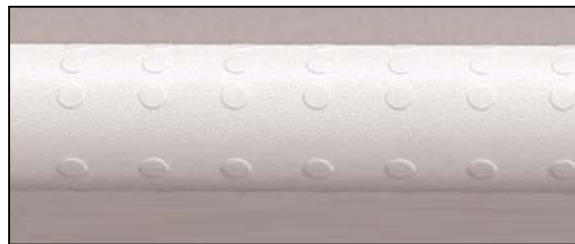
Material : Hand rail
Area : Public/residential/commercial
Location : Washroom/Shower room

Specification

Product :	Hinged swing-up handrail, dot pattern and anti-slip surface
Brand :	K'nCOSA
Model :	SB101-75
Size :	750mm L, 34mm tube diameter
Material :	ABS coated aluminium with 304 stainless steel bracket
Finish :	White, dot pattern and anti-slip surface
Loading :	150 Kg
Features :	Anti-bacterial, avoid cold grip, no earthing/grounding needed
	Good fire retardant (Optional)
	Furnished with type 304 stainless steel screws
Standard :	CE, ISO 9001:2000, RoHS, Japan Anti-bacterial report, loading tested



34mm tube diameter

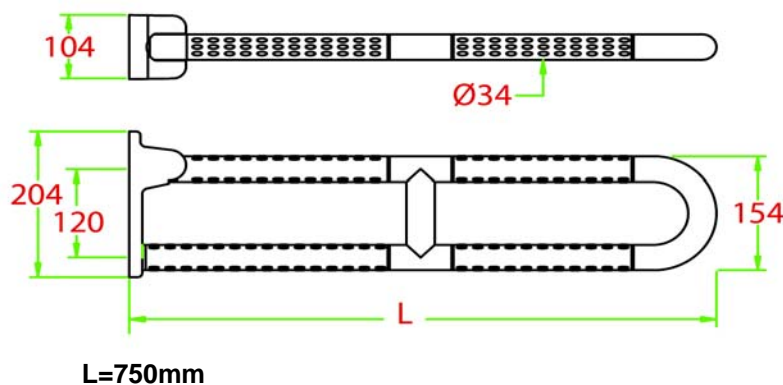


Dot pattern and anti-slip surface

K'nCOSA



ADA Compliance



Once grab bar is raised up, counterweighted design prevents grab bar from falling back down.